

CARL FRIEDRICH ABEL

(1723-1787)

See separate file 'Abel' in Thematic Index

ABEL, Clamor Heinrich (1634-1696)

'Sonata sopra CucCuc' in G major for violin, bass viol and continuo



GB-DRc, D2, no. 19 [H. Abell]

GB-HADolmetsch, II.c.25, no. 9 [Clamor Hen
Abell]

GB-Lbl, Add. 31423, ff. 230/249/261v (no. 14)
[Anon.]

for 2 violins and continuo



F-Pn, Rés Vm⁷ 673, no. 45



F-Pn, Rés Vm⁷ 673, no. 86

Further information from Richard Carter:

Clamor Heinrich Abel's "Musicalische Blumen" was published in three parts:

Part One (52 pieces, 1674) and Part Two (59 pieces, 1676, dedication dated 1675) - both titled "Erstlinge Musicalischer Blumen" - contain suites for four instruments (most probably violin band with two treble violins) and harpsichord continuo.

Part Three (61 pieces, 1677, dedication dated 1676) - "Dritter Theil Musicalischer Blumen" - contains eight suites (Allemanda/Courante/Sarabanda/Gigue) for violin and harpsichord, plus a further seven suites for violin, lyra viol ("verstimbte Violadagamba") and harpsichord, of which the last is also for scordatura violin. No copy of the viol partbook is known to survive.

Clamor Heinrich Abel - Erstlinge Musicalischer Blumen (1674)

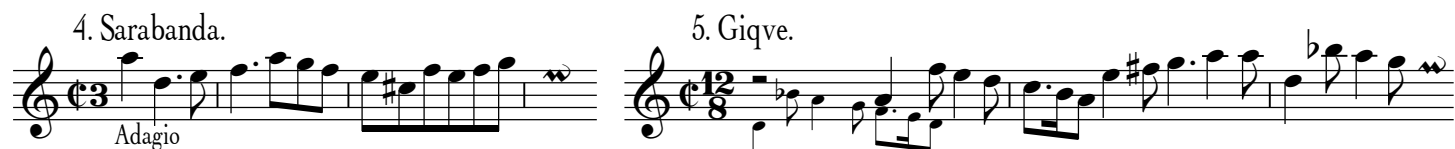
1. Praeludium. Sonatina.
Adagio. Allegro.



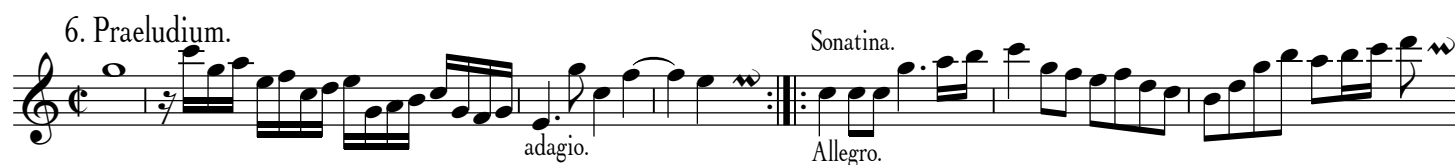
2. Allemanda. 3. Corrente.



4. Sarabanda. 5. Gigue.
Adagio.



6. Praeludium. Sonatina.
adagio. Allegro.



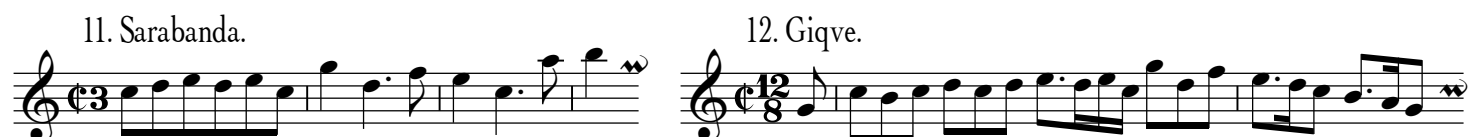
7. Allemanda. 8. Corrente.



9. Sarabanda. 10. Gigue.



11. Sarabanda. 12. Gigue.



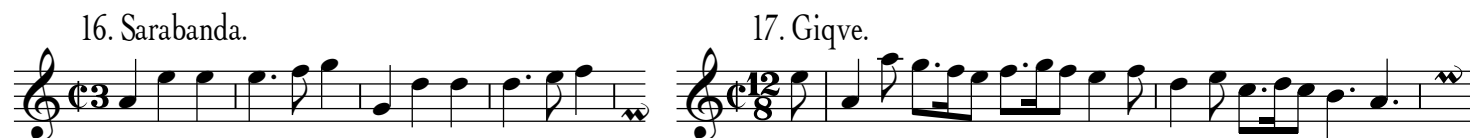
13. Praeludium. Sonatina.
Adagio. Allegro.



14. Allemanda. 15. Corrente.



16. Sarabanda. 17. Gigue.



Clamor Heinrich Abel - Erstlinge Musicalischer Blumen (1674)

18. Praeludium. Sonatina.
Adagio. Allegro.

19. Allemanda. 20. Corrente.

21. Sarabanda. 22. Gigue.

23. Praeludium. Sonatina.
Adagio. Allegro.

24. Allemanda. 25. Corrente.

26. Sarabanda. 27. Gigue.

28. Praeludium. Sonatina.
Adagio. Allegro.

29. Allemanda. 30. Corrente.

31. Sarabanda. 32. Gigue.

33. Praeludium. Sonatina.
Adagio. Allegro.

Clamor Heinrich Abel - Erstlinge Musicalischer Blumen (1674)

34. Allemanda.



35. Corrente.



36. Sarabanda.



37. Gigue.



38. Praeludium.



Sonatina.



39. Allemanda.



40. Corrente.



41. Sarabanda.



42. Gigue.



43. Praeludium.



Sonatina.



44. Allemanda.



45. Corrente.



46. Sarabanda.



47. Gigue.



48. Praeludium.



Sonatina.



49. Allemanda.



50. Corrente.



51. Sarabanda.



52. Gigue.



Clamor Heinrich Abel - Erstlinge Musicalischer Blumen (1675/6)

1. Praeludium.



2. Allemanda.



3. Corrente.



4. Sarabanda.



5. Gigue.



6. Allemanda.



7. Corrente.



8. Sarabanda.



9. Gigue.



10. Praeludium.



11. Allemanda.



12. Corrente.



13. Sarabanda.



14. Gigue.



15. Praeludium. [note: this key sig. in PARS PRIMA only, in error]



16. Allemanda.



17. Corrente.



18. Sarabanda.



19. Allemanda.



20. Corrente.



21. Sarabanda.



22. Gigue.



Clamor Heinrich Abel - Erstlinge Musicalischer Blumen (1675/6)

41. Praeludium.



42. Allemanda.



43. Corrente.



44. Sarabanda.



45. Gigue.



46. Praeludium.



47. Allemanda.



48. Corrente.



49. Sarabanda.



50. Gigue.



51. Sonata Battaglia.



52. Allemanda.



53. Ballo presto.



54. Corrente.



55. Gavotte.



56. Sarabanda.



57. Ballet.



58. Sarabanda.



59. Gigue.



NOTE: for nos. 56-59 the second part is missing.

ACHILLEO, Paolo

2 vln, bc

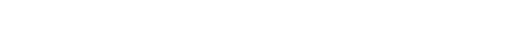
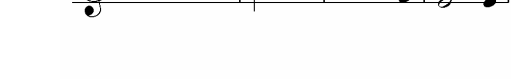
[Sonata]



F-Pn, Rés Vm⁷ 673, no. 131

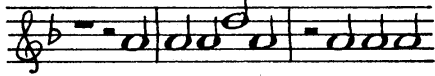
ADSON, John


c.1586-1640)



ADSON, John (1586/7-1640) Courtly Masquing Ayres (1621)	GB-Lbl, Add. 10444 (a2: Treble/Bass)	GB-Lbl, Add. 38539	
<p>Five-part pieces</p> <p>1. Adsonns Masque*</p> <p>2. Mr Adson Masque</p> <p>3. Adsonns Masque</p> <p>4. Essex Anticke Masque</p> <p>5. The First of my Lord of Essex</p> <p>6. The Second</p> <p>7. The Third</p> <p>8. The Second [Temple Antick]</p> <p>9. The First of the Temple Antick</p> <p>10. The First Witches Dance</p> <p>11. Broxboorn berry Maske</p> <p>12. Broxboorn berry Maske</p> <p>13. Williams his Loue</p> <p>14.</p> <p>15. Van-weelly</p> <p>16.</p> <p>17.</p> <p>18.</p> <p>19.†</p> <p>20.†</p> <p>21.†</p> <p>*titles from GB-Lbl, Add. 10444</p> <p>†‘for Cornets and Sagbuts’</p> <p>Six-part pieces†</p> <p>1.</p> <p>2.</p> <p>3.</p> <p>4.</p> <p>5.</p> <p>6.</p> <p>7.</p> <p>8.</p> <p>9.</p> <p>10.</p>	<p>f./no.</p> <p>15v;70v/9</p> <p>39v;90r/83</p> <p>39v;90r/84</p> <p>42r;92r/92</p> <p>42v;92r/93</p> <p>42v;92v/94</p> <p>42v;92v/95</p> <p>51r;100r/123</p> <p>50v;100r/122</p> <p>21r;74v/25</p> <p>13r;67v/5</p> <p>13r;67v/4</p> <p>47r;96v/110</p> <p>34r;85r/64</p> <p>38v;89v/81</p> <p>treble; bass only</p>	<p>[Lute]</p> <p>f.30v</p>	<p>[Robert Johnson]</p>
	<p>GB-Ob, Mus. Sch. D.220</p>		
<p>32. Corant C/a</p>	<p>p.39, no.36 a2: bass only</p>		<p>ADSON-2</p>
<p>January 2009</p>			

ALCOCK

In Nomine a [5?] E329  US-Ws MS Va408 f.15'
(cantus only)
[these two MSS may be related]

In Nomine a7 E325  GB-Lbl Add MS 32377,
f. 17 (cantus only)

RICHARD ALLISON Mixed Consorts - concluded	OTHER ABBREVIATIONS Consort of Six { Treble Tr Lute L Flute Fl Cittern C Bandora P Bass B Recorder R Solo S	MORLEY 1599	MORLEY 1611	ROSSETER 1609	SIMPSON 1617	WALSINGHAM	CU MSS						Lb1		Private hands		Publications					
							Dd 4.22	'Cambridge Consort books'			Dd 2.11	Dd 5.78.3	Add MS 31392	Hirsch MS M1353	f.	f.	no.	no.				
								Dd 5.21	Dd 3.18	Dd 5.20									no.	no.		
Go from my window E607		12 A not L	12 A not L			33 TFH CB	f.	f. 12' PA	f. 34' L	f.	f.	f.	f.	f.	f.			no.	no.	12		
Mrs. Millicent's pavin E608				12 Fl C					57' L	10' B												
-galliard E801				12 Fl C					-	-												
Mr Alisons Almayne E673						16 TFH CB								15' P	10 L							4
Quadro pavin E674		1 A not L			XXII a5	29 TFH CB	4'													1		
-galliard E833		2 A not L				29 TFH CB	4'													2		
Paven Dolorosa E701						11 TFH CB		7' A R	46' A L	7' A B	4' SL	32' SL										3
Pavin E702									19' L		71 SL	33 SL	30' SL	3' A SL								
The Spanish Measure E873						22 CB																

Browne bandora & lute viol book
Sampson lute book (formerly Tollemache)

JOHN AMNER

Verse anthems

Pavan and Galliard a5

AMNER 1615

GB-
Lbl
Add
MSS

30826-8

Ob
MSS
MUS

f. 20-24

Och
MSS

56-60

US-
NYp
MSS

Drexel
4180-5

CORDA MUSIC

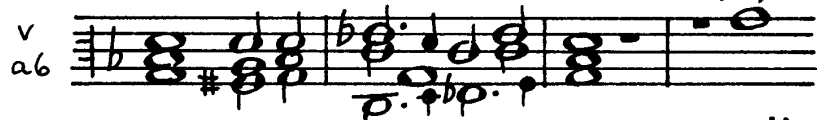
O ye little flock



Fear not

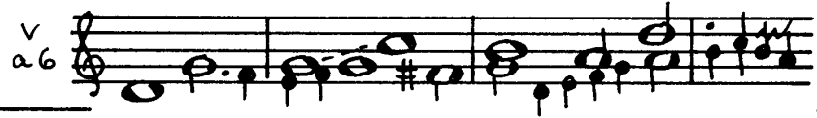
And they cry

Lo, how from heaven

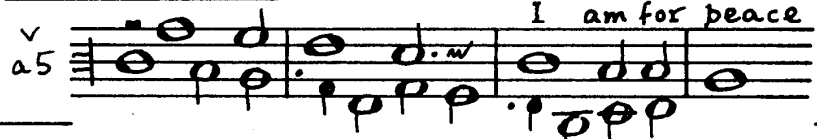


I bring you glad tidings

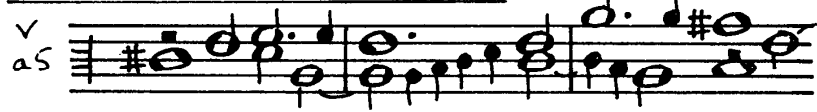
My Lord is hence removed



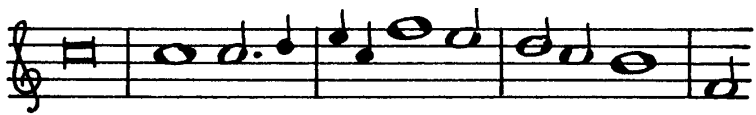
I am for peace



Consider all ye passers by



Pavan a5 (incomplete)



Galliard a5 (incomplete)



no.

19

no.

no. a6

11

P.

f.

60'

20

12

61'

21

13

62

22

14

62'

23

15

63

25

64

6

98

3 parts
only

4 parts
only

1

2

✓

✓

Mr. ANTHONYE

Preludium 1 fefhf
for solo lyra viol F

Handwritten musical notation on a five-line staff. The notation includes two treble clefs at the top. The first measure contains the notes 'a', 'c', 'e', 'f' with a slur over them. The second measure contains 'a', 'c', 'e', 'a', 'c'. The third measure contains 'a', 'b' with a slur over them. The fourth measure contains 'a', 'b', 'a'. The fifth measure contains 'a', 'c', 'd', 'a'. There are also some handwritten symbols like '∂' and 'b' with a slur over them.



GB-Mp MS 832 Vu 51, 3rd tuning, no. 1; P. 37:2

ANTHONYE-1

ARNALD

'Sig^f Arnald, K. Denmark, Gen. July $\frac{30}{92}$ '

Divisions, one on each section

I.  II. 

Ground

GB-03 MS Mus Sch
C.61, p.32 rev:1

ARNALD-1

ARNOLD, Gregory

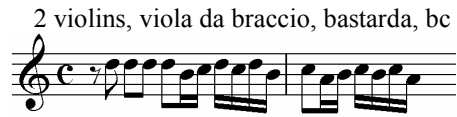
D-W,
Cod.
Guelf.
34.7.
Aug 2^o

Canzona



no./p.
67/120

Canzona



77/149

John ATKINSON

Perhaps the Court musician (died 1671)

VdGS No.

1. Saraband C  GB-Ob, MS Mus. Sch. D.220,
p. 81, no. 60 (bass only)

Mr. **AYLWARD**

Ayre 1

for solo lyra viol

defhf
G

a a b d	a c c a a	a b a c
a	a	a
a		

PLAYFORD-T no. 229