

MICHAEL EAST

(c.1580-1648)

East's specialities were his individual style, and his ability to get his consort music into print.

The three A-minor 4-part pieces were appropriately named 'A re the first, second and third', but inappropriately rendered in a modern concert programme as 'AIRE the first...etc.'.

'Name right your notes', 'Sing this as that' and 'Some alteration' seem to call for an interpretation from the early pages of Morley's 'Introduction'.

As every piece is named, no Society numbering is required; the Roman numerals shown here are those found in the printed editions.

Fantasies a 3		US-NH Filmer MS 4	All in EAST 1618
	GB-162 Add MS 34800	↓	All published in EAST 1618/1
I. Trip it lightly	f inv	f.	XI White as lillies
II. Turne round about	51' :1	51	XII Doe what you can
III. Flye not away	51' :2	51'	XIII. Mourning I dye.
IV. Softly for falling	51 :1	52	XIV. Stay yet a while.
V. My lovely Phillis	51 :2		XV. Come, Lets be gone.
VI. And I as well as thov	50' :1		XVI. I cannot stay
VII Love is a Toye.	50' :2		XVII. Feare not the end.
VIII Sweet Ladye, Stay	50' :3		XVIII. Lively my heart
IX What art thov ?			XIX. My time is spent
-X. No hast but good			XX. Smooth and soft.

MICHAEL EAST	QB- Lb1 Add MS	All in EAST 1638.	Lb1 Add MS
Fantasies for two bass viols.	31424	All published by the VdGSA and by Northwood Music.	31424
I. Love cannot dissemble	f. 32' A RT 557 only	V. Draw out the end	f. 31' A RT 559 only
II. I as well as thou	30' A RT 555 only	VI. Follow me close	34' RT 547 only A
III. Both alike	35' A RT 554 only	VII. Ut, re, my	37' A RT 558 only
IV. Hold right	33' RT 553 only A	VIII. Dally not with this.	36' RT 556 only A

Fantasies a 3

Nos. 1-4, 6-9 in US-Nyp MS
Drexel 5612, nos. 1-8, pp. 34-42.

All in EAST 1638

All published in VdGS SP73.

These verses are from a painted ceiling at Crathes Castle, Kincardineshire, on which each Muse is depicted, carrying or playing the article or instrument named opposite *

IX Cleio

* (book)



I, Clio, craftelie dois wryte
As eldest of thir sisters heir
Of ancient histories I indite
And marciall feates of men of weir

X Melpomene

* (bass viol)



Melpomene man by my style
With viole to supple my versis
Of tragidies I do compyle
As Bochas in his buke reheris

XI Thaleia

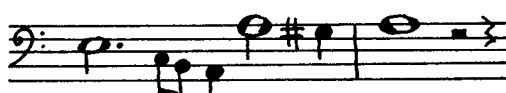
* (treble viol)



And I dame Thalia may be sein
To loupe and fling with firines
My fiddile furth shaws my yeirs green
As maistres of all mirrines.

XII Euterpe

* (tenor flute)



Euterpe I am this arte did found
To play on quhissle first devysit
All melodie and plesand sound
By me they be better prysit.

XIII Ter[ps]icore

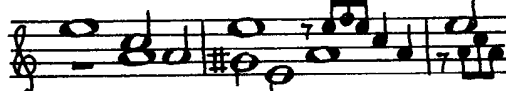
* (lute)



Heir Terpsichor take tent to me
To play on lute I have profest
All troublet myndis to molifie
Either travel to take sum rest.

XIV Erato

* (cittern)



Erato heir behalde and se
With seister set to galyardine
The lay of love come leir at me
Bot nocht veneriall palyardine

XV Calliope

* (harp)



For cunning Caliope does excel
With harp in hand ye may persave
In ballet royall I hear the bell
And prasit be poetis by ye leave

XVI Eurania

* (globe)



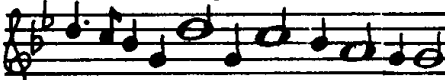
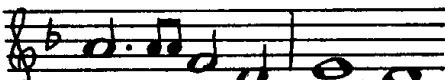
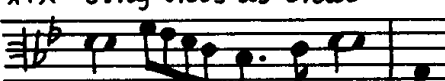
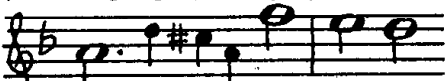
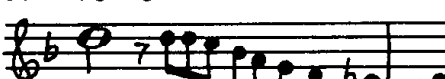
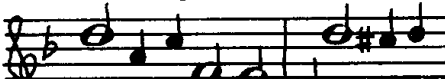
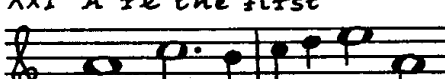
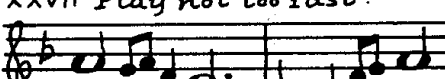
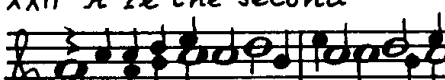
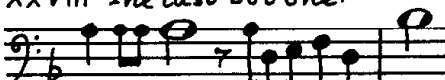

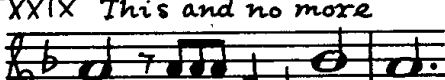
Urania behalde me heir
My globbe may travel testifie
I reule the planetis and the speir
As maistres of astronomie.




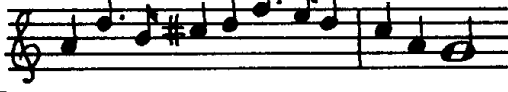

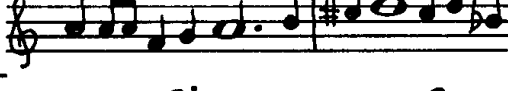

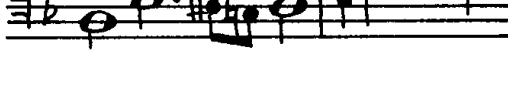
XVII Polyhymnia

* (clavichord)



Polyhymnia the last of nyn
My monochordis may weil express
Quick memorie and sharp Imgyn
Abhorring still forgetfulness.

MICHAEL EAST Fantasies a 4	GB- T MS 302		MEYER ECM	All in EAST 1638 All published: Dovehouse - viols Schott - recorders	T MS 302			
XVIII Name right your notes 	f.		A P P X	XXIV Not over long 	f.			
XIX Sing this as that 				XXV Somewhat short 				
XX Some alteration 	43			XXVI Softly at last 				
XXI A re the first 				XXVII Play not too fast. 	43'			
XXII A re the second 				XXVIII The last but one. 				
XXIII A re the third 	45			XXIX This and no more 	44			

Fantasies a 5 All in EAST 1610. All published in EAST 1610/1		GB- Lb1 Eg. MS 3665	Lcm MS 1145	Och MSS 716-20	US- Wc MS M990. C66FA	US-CI Wr f.35v	Schott	S & B, parts from EAST 1610/1
		no./f	no.	no.	Vol/no.	no.		seq.
I Desperavi 		70,1 159'	all attr Coperario	48	both attr. Coperario	CAB parts only	✓	(1)
II. Peccavi 		71,2 160		49				(2)
III Vidi 		72,3 160'						(3)
IV Penitet 		73,4 161'	[14a]	41	I/3			(4)
V Credidi 		74,5 162'	[15a]		I/4	37		(5)
VI Vixi 		75,6 163	[16a]	42		5		(6)
VII Triumphavi 		76,7 164	Tregian	Lestrange	[Barnard?]			(7)
VIII Amari 		77,8 164'						
								EAST-3

MICHAEL EAST

Verse pastoral

Verse anthems

GB - 1b1

Add. MSS

Ob

MSS

MUS

Och

MSS

T

MSS

US-

My

MSS

Drex

4-180-5

EAST

1610/1

1618/1

PUBL

ANTHEMS

R

no.	no.	no.	f.	f.	f.	f.	f.	no.	no.	p.	no.	f.	p.	p.
1						23' A								49
2						24' A					59 A			✓
3						24' A					59 A			✓
4			112'	20'	15 A	97 A	22				60 A	34	62	44
5			113'	21	15' A	97 A	23				61 A	34	72	52
16						18 A							82	104
17						-							91	112
10						92'							83	
11						93'							94	
21						19'			37 a6				142	
22						20'			38				153	
		1							17 a5					25
		2							18					32
		3							19					36
		4							14 a5					13
		5							15					17
		6							16					21
		14	116' i							209		57'		75
		15	116' 2							209		57'		83
		16	117							210		58		92

Sweet Muses

Sweet Mu-ses ♯



In the Latin version, the opening accompaniment is different.

Cantate Nymphæ e pastori (i)

Aye me, wherefore sighs (ii)

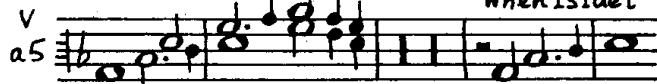
Ahi me (ii)

My peace and my pleasure (iii)

Ma pace (iii)

When Israel came

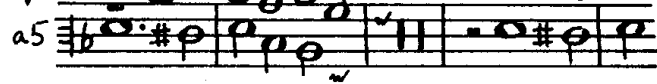
When Israel



What aileth thee (ii)

Turn thy face (i)

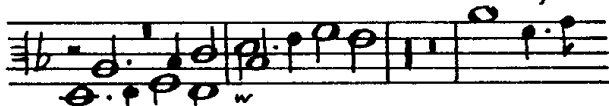
Turn thy face



O give me the comfort (ii)

O clap your hands (i)

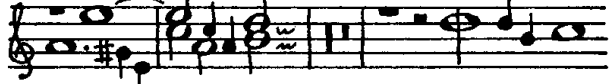
O clap



God is gone up (ii)

Haste ye, O God (i)

Haste ye O God



But let all those (ii)

As they departed (i)

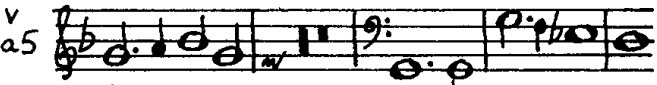


But what went you out to see (ii)

For this is he (iii)

I have roared (i)

I have roar - ed



I am brought into so great trouble (ii)

My loins are filled (iii)

Sing we merrily (i)



Sing we merrily

Take the psalm (ii)

EAST-4

Blow up the trumpet (iii)

MICHAEL EAST

Pavin 1 for

2 lyra viols

fefhf:

Handwritten musical notation on a five-line staff. Above the staff, rhythmic notation includes a dotted quarter note (d.), a quarter note (d), a quarter note (d), a quarter note (c), a quarter note (d), a quarter note (d), and a quarter note (d). Below the staff, the notes are written as 'a c d a d' in the first measure and 'd c d b b' in the second measure. A vertical bar line separates the two measures.

GB-06 MSS
Mus Sch
D.245-6
pp 29, 29

EAST-5

Daniel **EBERLIN** (1647-
c.1713-15)

D-K2 MSS
4^o MUS 108
Vols.

Airs for bass viol(s) with Bc

vags
No. *ffeff:*

3	4	2
	*	

		no, f.	no, f.	f					
Allemande 1 d		125 ⁺ 73'	125, 45' :1						
Courante 2 d		126 ⁺ 74	126, 45' :2						
Sarabande 3 d		127 ⁺ 74'	127, 46						
Gigue 4 d		128 ⁺ 75	128, 46'						
Allemande 5 A		133 ⁺ 77'	133, 48'						
Gavotte 6 A		134, 78	134, 49						
Aria 7 d		137 ⁺ 80', 81	137, 50' :1	58 ex Anon 6116					
Lamento 8 d		138 ⁺ 81', 82	138, 50' :2	57 ex Anon 6114					
Sarabande 9 d		139 ⁺ 82', 83	139, 51 :1						
Gigue 10 d		140 ⁺ 83', 84	140, 51 :2						

* In Nos. 1-6, the solo part, in tablature, is in Vol 3 and the Bc, in staff notation, in Vol 4. In Nos 7-10, the bass part appears additionally, in tablature, opposite the solo part in Vol. 3.

EBERLIN, Daniel (1647—c.1714)

Sonatas for 2 vlms, bass and bc



F-Pn, Rés Vm⁷ 673, no. 150
Trium mirifice (1675), no. 2
'La Eminenza'



F-Pn, Rés Vm⁷ 673, no. 149
Trium mirifice (1675), no. 3
'La Favorita'

JOHN

EGLSTONE

Published MB 45: {
No. 156

In Nomines a 5

VdGS
No. 1

E 256

GB-0b MSS Mus Sch D.212-6, no. I/1 a 5

Musical notation for No. 1, VdGS. It consists of two staves: a treble clef staff and a bass clef staff. The treble staff contains a melodic line with various note values and rests. The bass staff contains a bass line with chords and rests. The key signature has one flat (B-flat), and the time signature is 4/4.

No. 157

VdGS
No. 2

E 257

D.212-6 No. I/40 a 5

Musical notation for No. 2, VdGS. It consists of two staves: a treble clef staff and a bass clef staff. The treble staff contains a melodic line with various note values and rests. The bass staff contains a bass line with chords and rests. The key signature has two flats (B-flat and E-flat), and the time signature is 4/4.

Mr. ELLIOTT (Oxon.)

GB-Mp MS
832
Vu 51

Airs for Bass viol
ffeff

Tun.
no. P.

Alman 1

Handwritten musical notation for 'Alman 1'. It consists of three staves. The top staff has a treble clef and contains notes: a, a, c, a, h, f, a, a, a. The middle staff has a bass clef and contains notes: b, f, a, b, a. The bottom staff has a bass clef and contains notes: c, b. Above the notes are rhythmic markings: a quarter note, a dotted quarter note, a quarter note, a quarter note, a quarter note, a quarter note, a quarter note, a quarter note, a quarter note.

I,
17 25







[Coranto] 2

Handwritten musical notation for '[Coranto] 2'. It consists of three staves. The top staff has a treble clef and contains notes: d, d, d, a, c, a, f, f, a, c, h, h, f, a. The middle staff has a bass clef and contains notes: b, a, f, a, f, c, c, a, e, e, f. The bottom staff has a bass clef and contains notes: c, b. Above the notes are rhythmic markings: a quarter note, a quarter note, a quarter note, a quarter note, a quarter note, a quarter note, a quarter note, a quarter note, a quarter note, a quarter note, a quarter note, a quarter note, a quarter note, a quarter note.

I.,
21 :2

William ELLIS (d. 1679). Oxford organist who organized concerts in the Interregnum.

Apart from these airs, Ellis also wrote anthems and keyboard music.

VdGS Nos.		Bass parts only of two-part airs	GB-Och, Mus. 1022	
1.	Almain d		No. 17	
2.	Corant d		18	
3.	Almain d		19	
4.	Almain d		20	
5.	Saraband d		21	
6.	Michaelmas Day C		22	

Christian ENGLEMAN

Four-part airs (both published LPM)

1. Courant  T SIMPSON 1621, No. 27

2. Ballet  T SIMPSON 1621, No. 47

ERBEN, Johann Balthasar
1626-1686

S-Uu,
imhs

Sonata sopra
'ut re mi fa
sol la'



2 violins, bc

3:4

January 2009

ERBEN-1

John ESTO

Airs for lyra viol

defhf:

		PLAYFORD T	FIRE-DM MSS	GB-CHEr MS	Mp MS	Ob MS Mus Sch	GB-Lbl	GB-En		
		No.	No. f	f	Tu. No.; P.	f inv	seq.	f/seq		
Alm			11,							
1			67							
Alm		239	64'							
2			inv							
Sar		20								
3										
edfhf										
[Cor]		295				78'				
11						:1				
[Sar.]						78'				
12						:2				
Alm						78				
13						:1				
Cor.						78				
14						:2				
[Sar.]				148'		77'				
15				:1		:1				
Alm		244				77				
16						:1				
Cor		298				77				
17						:2				
Cor						76'				
18						:1				

'Mr. Esto's harp way'

'Mr Esto's second set harp flatt'

cf. Young 72

JOHN ESTO

Airs for Lyra viol

e d f h f - cont^d

PLAYFORD - T	GB-Lbl Add MS	Mp MS	Ob MS Mus Sch	GB-Lbl				
No.	no. of	Tun. no.:	f. inv	seq.	P/seq			
Cor 19	17, 20:3		76' :2	Same as no. 24				
Prel. 20			76 :1					
Alm 21	13, 20:1	XI, 20;	76 :2					
Alm 22	206	3, 17:1		(44)	6r (18)			
Sar. 23	40	4, 17:2						
Alm 24	268	Cartwright		Same as no. 21				
Sar 25	15		XI; 18;	(42)	A			
Jig 26	16							
Alm 27	223							
Alm 28	249							
Cor 29	56							

'3 Set Jan Esto

Handwritten musical notation for each piece, including notes, rests, and figured bass (g, a, b, c, d, e, f, h).

Cor 19: *a a a a a a e a c e*

Prel. 20: *f a b f a f a c e a*

Alm 21: *a a f e f a b a b a*

Alm 22: *a e c a a a c a b a*

Sar. 23: *a a a a b b a a b b a*

Alm 24: *a a f e f a b a b a e*

Sar 25: *i h a f h f e a f b b a*

Jig 26: *f a a c e c a a*

Alm 27: *a a c a a c d c e c a*

Alm 28: *f a a c e a c f c a f a*

Cor 29: *e c c c e a f e a b d*

JOHN ESTO Airs for lyra viol e d f h f cont ^d		PLAYFORD - T	GB- Lb1. Add. MS	M MS							
		no.	no. f.	Tun. no. P.	f./seq						
Alm 30		219									
Cor 31		6									
Sar 32		146									
Sar 33		296									
Cor. 34		97			XI, II; II 6 : 2	7r (19)					
Ayre 35		297									
Sar 36		299									
Alm. 37											
Alm. 38											
Cor. 39											
Sar. 40											
Sar 41	see p. ESTO-4	November 2008									

* 'Easto', ∴ pronunciation?

JOHN ESTO
Airs for lyra viol

PLAYFORD - T

GB-
Mp
MS

832
Vu 51
Griffiths
Boynston MS

fedfh :

Alm.
51

no. 241

MS. no. XIV, 1; 153 :1

f.

Alm.
52

220

Cor.
53

132

Sar.
54

55

XIV, 15; 162:1

Cor.
55

XIV, 2; 153:2

Sar.
56

XIV, 8; 157:2

a f e a f :

[Alm]
61

XIX, 1; 192 :1

e a f h f, cont. :

Sar.
41

83/
inv.

Cor.
42

GB-Lbl, MS Mus. 249, seq. (45): 'J. Esto or Jenkins'